

## ILS Laboratories

8222 Vickers St, Suite 106, San Diego, CA 92111  
(619) 329-3999 | ils-lab.com

### KLOW - 80mg



Tested for: PeptidePharm  
PeptidePharm.com

COA #: **COA-2026-412643**  
Lot Number: **KLOW-05042026**  
Accession #: **ACC-2026-2010**  
Labeled Content: **80mg**

Method: **Full QC Panel**  
Analysis Date: **05/08/2026**  
Appearance: **Good**  
Sample Matrix: **Lyophilized**  
Date Received: **05/05/2026**

**PASS**



Scan to verify  
authenticity at ils-lab.com  
Access Code: 6VQ4V82D

Identity  
**KLOW**

Peptide Purity  
**99.77%**

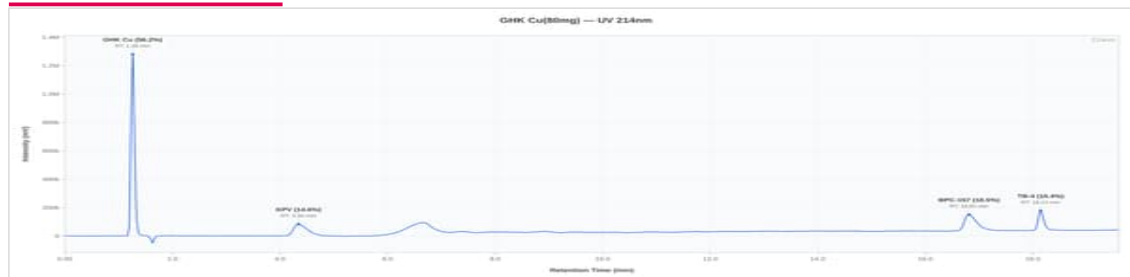
### Blend Purity & Quant (HPLC)

Analyte	Specification	Result	Unit	Status
Peptide Purity (HPLC)	>= 95.0%	99.77%	%	PASS
Net Blend Peptide Content	Report Only	85.54	mg	N/A
-- GHK-Cu		53.59	mg	
-- BPC-157		10.62	mg	
-- TB-500		10.83	mg	
-- KPV		10.50	mg	
Identity (HPLC-RTM)	GHK-CU + BPC-157 + TB-500 + KPV	Confirmed	-	PASS



KLOW 80mg - KLOW-05042026

### HPLC Chromatogram



Representative chromatogram, Dedicated V0 (99.77% purity, closest to batch mean of 99.77%)

### HPLC Conformity Testing Results (2 samples tested)

Sample	Purity	NPC	ID	Result
Dedicated V0	99.77%	85.54 mg	Confirmed	PASS
Conformity V1	99.77%	85.68 mg	Confirmed	PASS
Mean	99.77%	85.61 mg	—	—
Std Dev	—	0.0700 mg	—	—




**Dr. Greg Kalyuzhny**  
Lab Director  
6/2/2026

COA #: **COA-2026-412643**  
Access Code: **6VQ4V82D**  
Verify: [portal.ils-lab.com/verify/YM0EgEm2Szk7jD9](https://portal.ils-lab.com/verify/YM0EgEm2Szk7jD9)  
Issued: 6/2/2026

**Heavy Metals Analysis (ICP-MS)**

Test	Specification	Result	Status
Arsenic (As)	NMT 1.5 ppm	Not Detected	PASS
Cadmium (Cd)	NMT 0.5 ppm	Not Detected	PASS
Chromium (Cr)	NMT 10 ppm	Not Detected	PASS
Mercury (Hg)	NMT 1.5 ppm	Not Detected	PASS
Lead (Pb)	NMT 1 ppm	Not Detected	PASS

**Sterility Testing (PCR)**

Test	Specification	Result	Status
Sterility (PCR)	No Growth	No Growth	PASS

**Endotoxin Testing (USP <85>)**

Test	Specification	Result	Status
Endotoxin (USP <85>)	Report Result	0.067 EU/mL	Reported

About this result: Endotoxin is reported as a quantitative value. Acceptable limits vary by product type and matrix, so no universal pass/fail threshold applies to RUO products. This result is below commonly referenced endotoxin thresholds.

**Notes & Methodology**

- Date Tested: 06/02/2026. Methods: Blend Purity & Quant (HPLC).
- The sample was confirmed to be KLOW by HPLC. Identification by chromatographic retention time comparison with a reference standard.
- Elemental impurities analyzed by ICP-MS per USP <233> methodology. Acceptance criteria are internal laboratory quality screening limits for research-use materials and do not represent evaluation against any specific pharmacopeial monograph or product specification.
- Endotoxin tested per USP <85> kinetic turbidimetric method. Acceptance criteria per client specification.
- Peptide purity determined by RP-HPLC area normalization at 214 nm. Value represents the percentage of the target peptide relative to all peptide-related peaks. Non-peptide process-related impurities, if detected, are excluded from the calculation.
- Per-component content calculated from total net peptide content using the manufacturer's stated formulation ratio (GHK-Cu, BPC-157, TB-500, KPV). All components confirmed present by HPLC identity testing, unless explicitly stated otherwise.
- Chromatogram shown is representative: Dedicated V0 (99.77% purity, closest to batch mean of 99.77%).



**Dr. Greg Kalyuzhny**  
Lab Director  
6/2/2026

COA #: **COA-2026-412643**  
Access Code: **6VQ4V82D**  
Verify: <portal.ils-lab.com/verify/YM0EgEm2SzkN7jD9>  
Issued: 6/2/2026